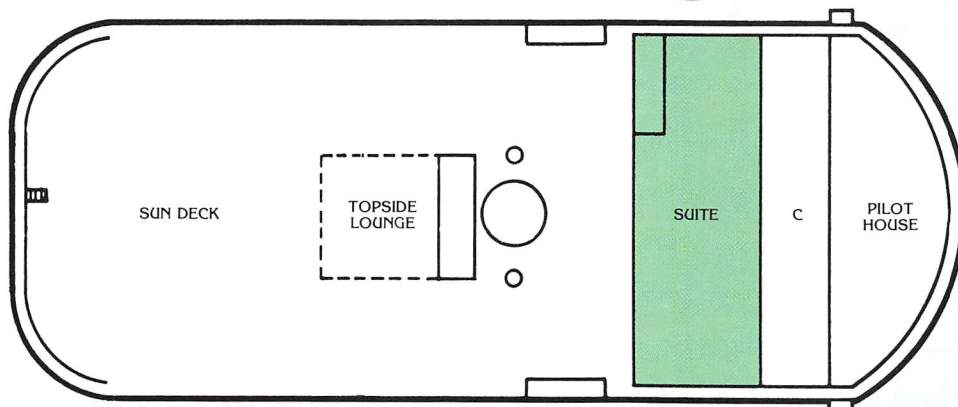
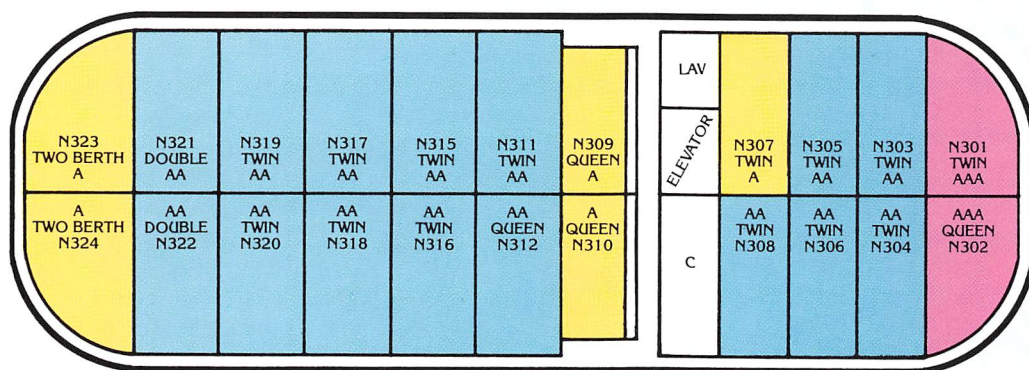


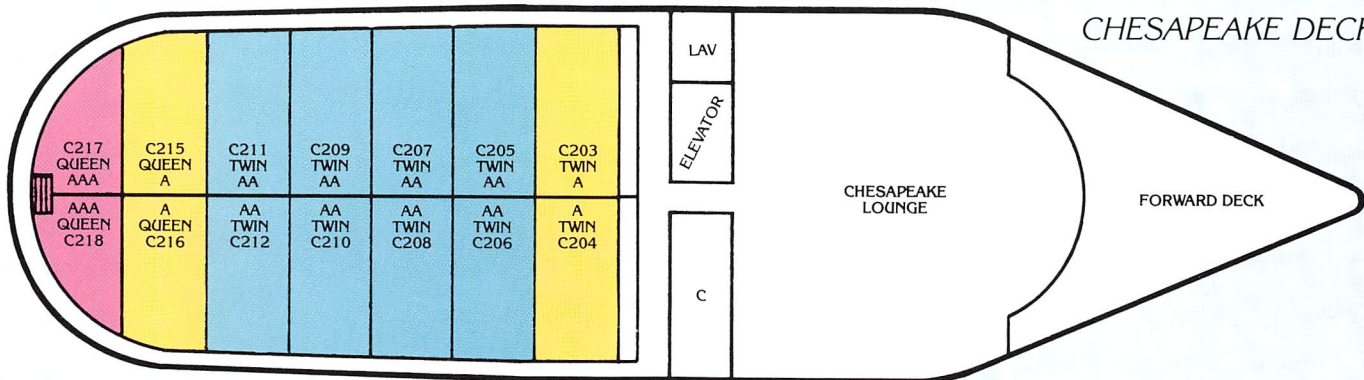
Pilgrim Belle Deck Plan



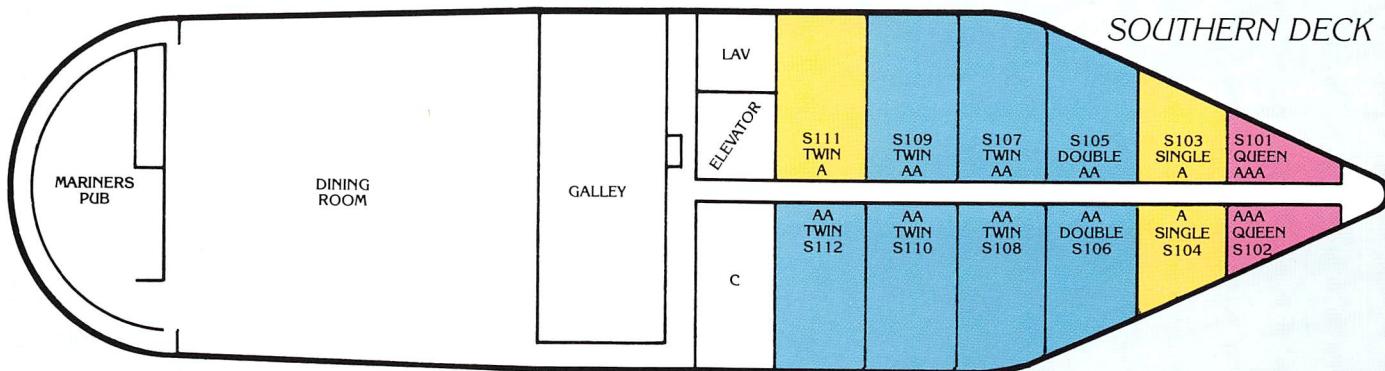
BRIDGE DECK



NEW ENGLAND DECK



CHESAPEAKE DECK



SOUTHERN DECK

- Note: a) Staterooms N309 and N310 also have facilities for handicapped persons.
 b) Staterooms S101 and S102 may be converted to four person family suites.
 c) Stateroom C217, C218, N301, and N302 may be converted to triples.

A-Staterooms (yellow)
AA-Staterooms (blue)
AAA-Staterooms (pink)
Suite (green)

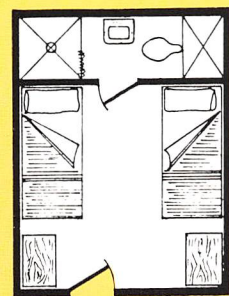
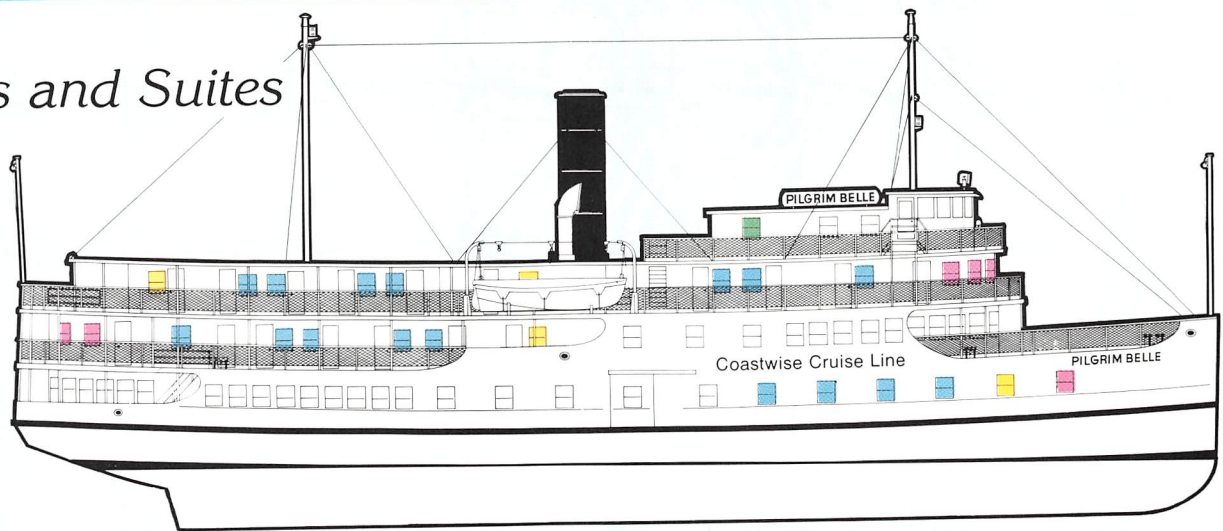
aterooms and Suites

ge & Sun Deck

England Deck

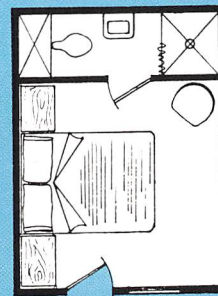
apeake Deck

thern Deck



A STATEROOMS

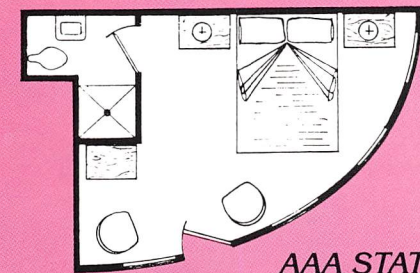
S103	C203	N307
S104	C204	N309
S111	C215	N310
	C216	N323
		N324



AA STATEROOMS

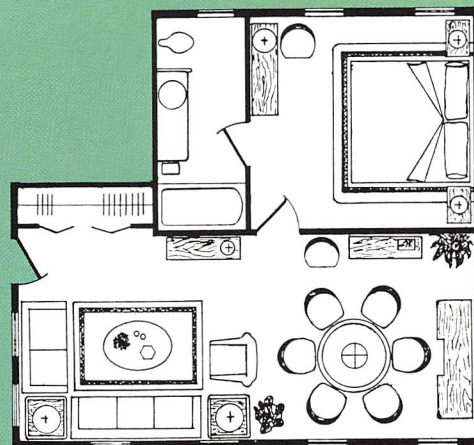
S105	C205	N303	N316
S106	C206	N304	N317
S107	C207	N305	N318
S108	C208	N306	N319
S109	C209	N308	N320
S110	C210	N311	N321
S112	C211	N312	N322
	C212	N315	

Both twin and queen bed arrangements are available in class A and AA as shown at left on the deck plans on page 18.



AAA STATEROOMS

S101	C217	N301
S102	C218	N302



SUITE

